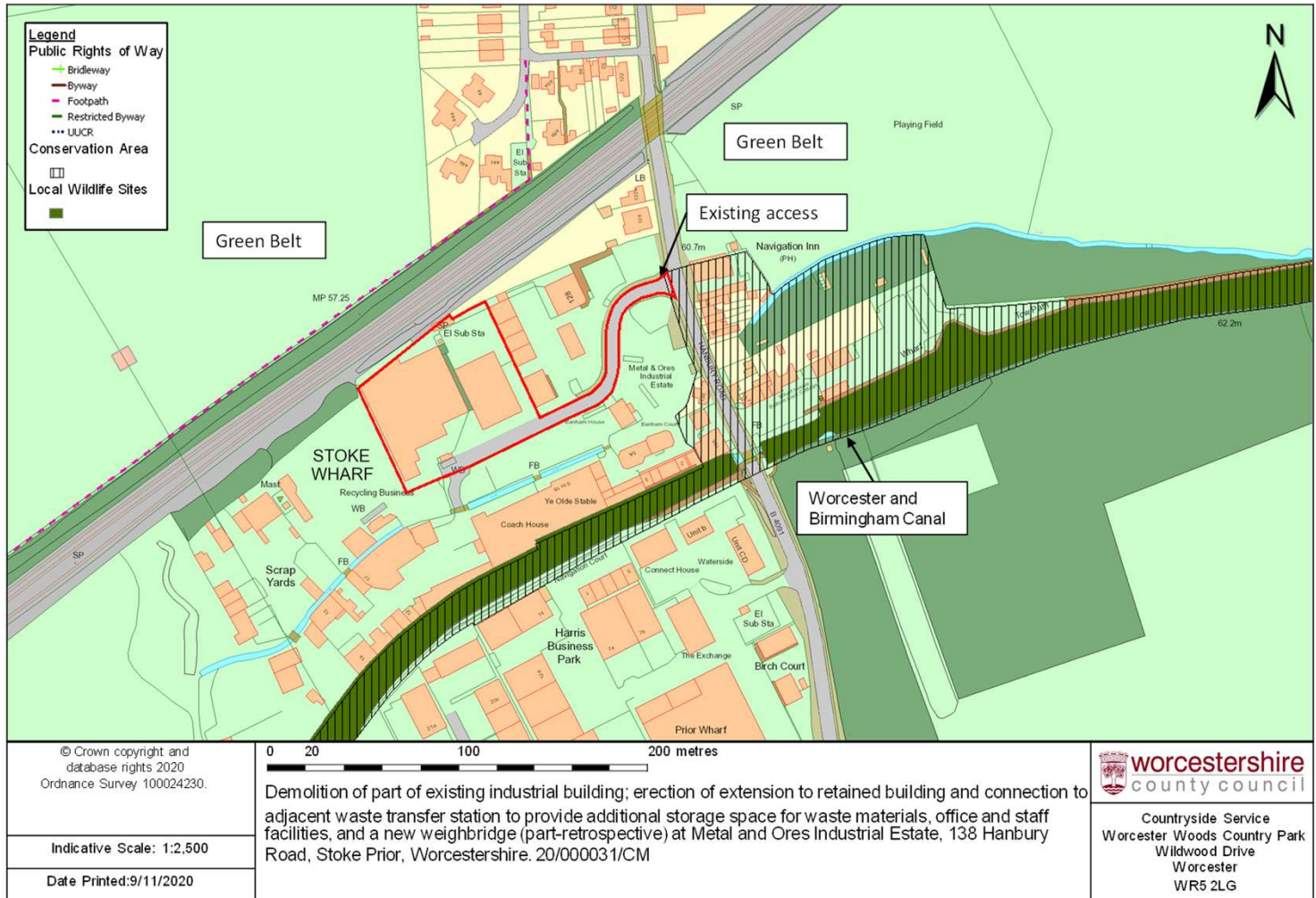


Site Context cont'd



Demolition of part of existing industrial building; erection of extension to retained building and connection to adjacent waste transfer station to provide additional storage space for waste materials, office and staff facilities, and a new weighbridge (part-retrospective) at Metal and Ores Industrial Estate, 138 Hanbury Road, Stoke Prior, Worcestershire. 20/000031/CM